

The Pinnacle

a luxurious recreational retreat

Fun Fact
The Pinnacle National Park formed from a volcano's remains! Its unique rock formations attract climbers, hikers, and bats.



A-Frame Style

Plans and elevations may contain options which are not standard on all models

The A-frame tiny home, inspired by Pinnacles National Park, effortlessly combines functionality with a welcoming atmosphere. Its thoughtfully designed layout ensures every corner is utilized efficiently, providing both practicality and comfort. Just like the captivating hiking trails of Pinnacles, this home offers warm and inviting spaces, inviting you to relax and unwind. With clever storage solutions and a spacious loft, it fulfills the promise of being an ideal sanctuary, whether for a brief getaway or a permanent residence.

Unique Features

- 400 sq.ft. main floor, 160 sq.ft. loft
- Grand living room picture window
- Master bedroom with built in wardrobe
- Full size bathroom with walk in shower
- Large closets under the stairs
- Stairway to the loft
- Skylights
- Unique roof lines
- Spacious kitchen
- Peninsula seating for 3
- 2 loft bedrooms
- Built in storage options



Side View



Deck View



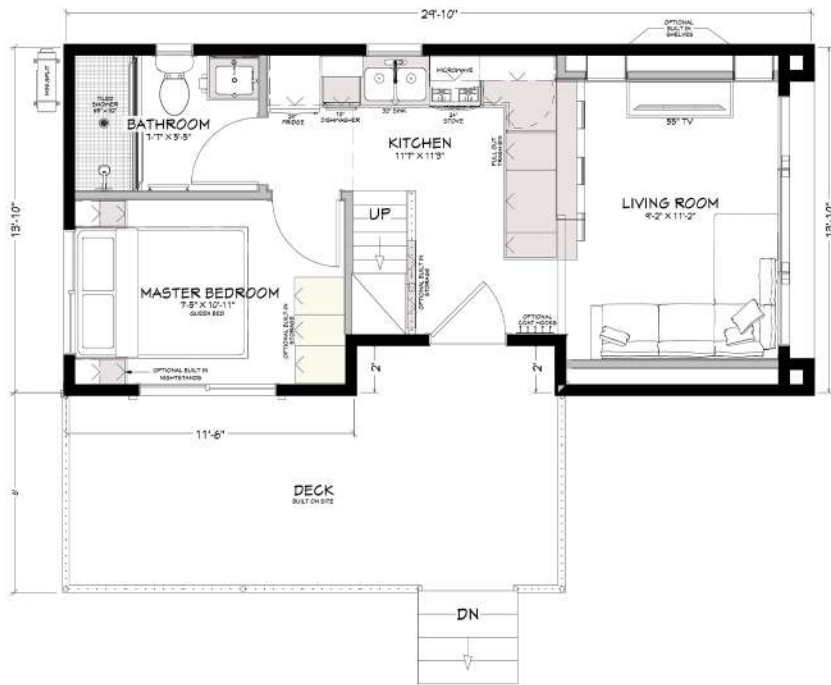
3123 S. Memorial Drive | Mt. Pleasant, WI 53403 | 109 Parr Avenue | Spicewood, TX 78669
P: 414 . 762 . 0950 | F: 414 . 762 . 0955
sales@utopian-villas.com | utopian-villas.com



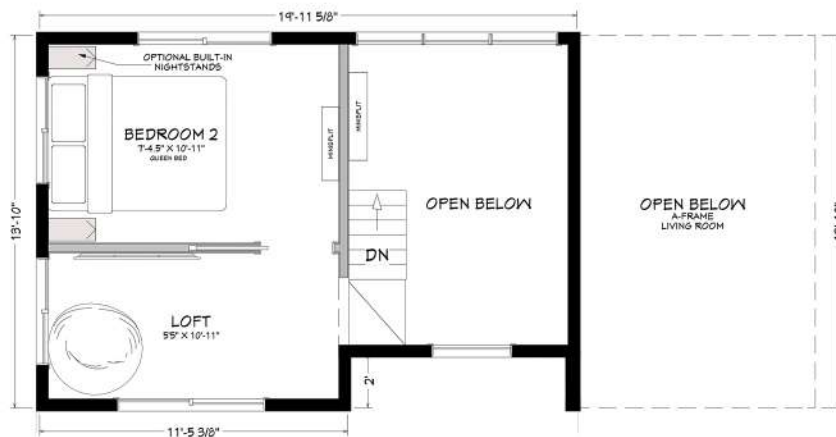
Rev. 06-24

The Pinnacle Floor Plan

Main Floor



Loft Floor



Utopian Villas reserves the right to make changes to the floor plans, specifications, dimensions and elevations without prior notice